

MAXPRO200® consumables – machine torch



Technologies

Chambered swirl ring

Conical Flow™

CoolFlow™

LongLife®

TrueFlow™

Vented shield

Tool free lead connection

Tool free nozzle

Inline valve process

Mild steel/stainless steel/aluminum consumables

	Amperage	Shield	Shield cap	Nozzle	Swirl ring	Electrode	Water tube
Air	50 A	220532	220936	220890	220529	220528	220521
			220935 without tab				
	130 A	220536	220936	220892	220488	220487	220521
			220935 without tab				
	200 A	420045	220936	420044	220488	220937	220521
			220935 without tab				
200 A gouging	420885	420794	420886	420928	420887	420881	
		420793 without tab					

Mild steel consumables

	Amperage	Shield	Shield cap	Nozzle	Swirl ring	Electrode	Water tube
O ₂	50 A	220532	220936	220891	220529	220528	220521
			220935 without tab				
	130 A	220491	220936	220893	220488	220487	220521
			220935 without tab				
	130 A CCW	220491	220534	220893	420796	220487	220521
			220533 without tab				
	200 A	220832	220936	220831	220834	220937	220521
			220935 without tab				
	200 A CCW	220832	220534	220831	420795	220937	220521
			220533 without tab				
200 A gouging	420885	420794	420886	420883	420887	420881	
		420793 without tab					

Stainless steel/aluminum consumables

	Amperage	Shield	Shield cap	Nozzle	Swirl ring	Electrode	Water tube
N ₂	130 A	220536	220936	220892	220529	020415	220521
			220935 without tab				
	200 A	420045	220936	420044	220529	020415	220521
			220935 without tab				



Mild steel extreme bevel consumables

	Amperage	Shield	Shield cap	Nozzle	Swirl ring	Electrode	Water tube
Air	130 A	420735	220936	420829	220488	420824	420823
			220935 without tab				
	200 A	420737	220936	420734	220488	420732	420823
O ₂	130 A	420735	220936	420828	220529	420824	420823
			220935 without tab				
	200 A	420737	220936	420733	220488	420732	420823
			220935 without tab				



MAXPRO200® torch assembly options – machine

Standard leads

Part number	Lead length
229477	7.5 m (25')
229478	15 m (50')
229479	23 m (75')
229480	30 m (100')

Mounting sleeves

	Part number	Description	Length	Diameter
1	220943	Standard mounting sleeve (2" outside diameter)	279.4 mm (11")	50.8 mm (2")
	220942	Standard mounting sleeve (1.75" outside diameter)	279.4 mm (11")	44.45 mm (1.75")

Torch options

	Part number	Description
2	420087	Straight torch (standard)
3	420033	Quick-disconnect receptacle (option)
4	220921	Quick-disconnect torch

Additional parts available (not shown)

Part number	Description
228937	Machine torch (straight torch, set of 200 A consumables)
104119	Consumables removal tool
428013	Machine torch consumables starter kit
027055	Silicone lubricant for o-rings
028872	Torch coolant – Cool solution: 70/30 PG, 1-gal.
807700	MAXPRO200 instruction manual

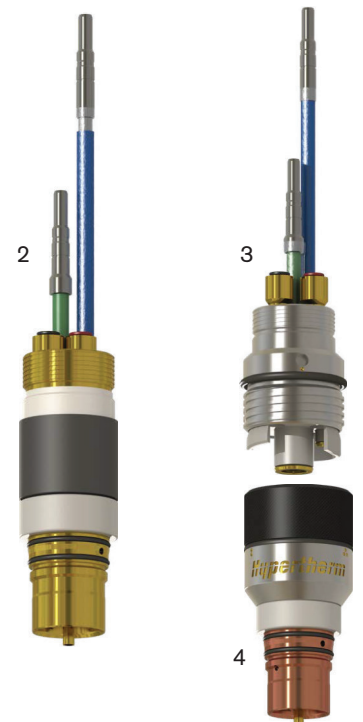
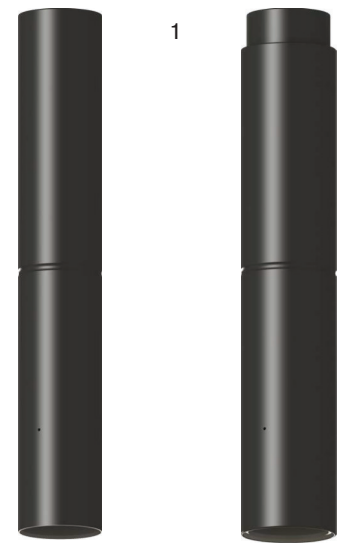
See page 56 to learn about the value of preventive maintenance.



Quick-disconnect machine torch



Straight machine torch



MAXPRO200® consumables – hand torch

Technologies

Chambered swirl ring

Conical Flow™

CoolFlow™

LongLife®

TrueFlow™

Vented shield

Tool free lead connection

Tool free nozzle

Inline valve process



Mild steel/stainless steel/aluminum consumables

	Amperage	Shield	Shield cap	Nozzle	Swirl ring	Electrode	Water tube
Air	50 A	420063	220935	220890	220529	220528	220521
	130 A	420061	220935	220892	220488	220487	220521
	200 A	420058	220935	420044	220488	220937	220521
	200 A gouging	420885	420793	420886	420928	420887	420881



Mild steel consumables

	Amperage	Shield	Shield cap	Nozzle	Swirl ring	Electrode	Water tube
O ₂	50 A	420063	220935	220891	220529	220528	220521
	130 A	420062	220935	220893	220488	220487	220521
	200 A	420059	220935	220831	220834	220937	220521
	200 A gouging	420885	420793	420886	420883	420887	420881



Mild steel extreme bevel consumables

	Amperage	Shield	Shield cap	Nozzle	Swirl ring	Electrode	Water tube
Air	130 A	420735	220936	420829	220488	420824	420823
			220935 without tab				
	200 A	420737	220936	420734	220488	420732	420823
			220935 without tab				
O ₂	130 A	420735	220936	420828	220529	420824	420823
			220935 without tab				
	200 A	420737	220936	420733	220488	420732	420823
			220935 without tab				



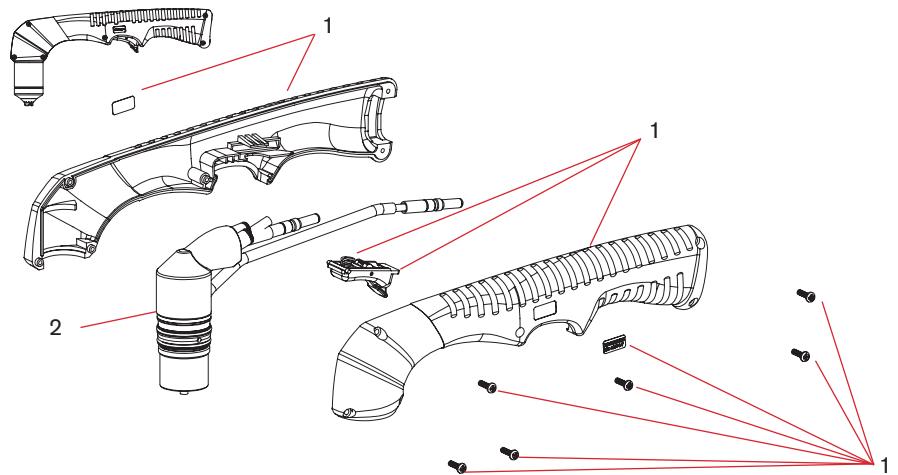
MAXPRO200® torch assembly options – hand

Standard leads

Part number	Lead length
428131	7.5 m (25')
428132	15 m (50')
428133	23 m (75')
428134	30 m (100')

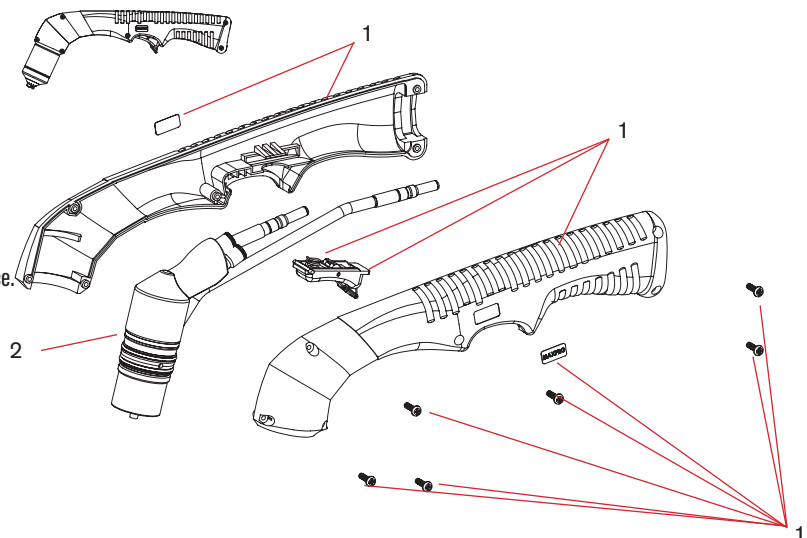
90° hand torch

	Part number	Description
1	228985	Handle replacement kit
2	428109	Torch main body
	428014	Handheld consumables starter kit
	228980	90 degree hand torch assembly with 7.5 m (25') lead
	228981	90 degree hand torch assembly with 15 m (50') lead
	228982	90 degree hand torch assembly with 23 m (75') lead
	228983	90 degree hand torch assembly with 30 m (100') lead



65° hand torch

	Part number	Description
1	228986	Handle replacement kit
2	428108	Torch main body
	428014	Handheld consumables starter kit
	228976	65 degree hand torch assembly with 7.5 m (25') lead
	228977	65 degree hand torch assembly with 15 m (50') lead
	228978	65 degree hand torch assembly with 23 m (75') lead
	228979	65 degree hand torch assembly with 30 m (100') lead



See page 56 to learn about the value of preventive maintenance.