

XPR® consumables

Technologies

Chambered swirl ring

Conical Flow™

CoolFlow™

Cool nozzle

HyDefinition®

LongLife®

PowerPierce®

Plasma dampening

QuickLock™ electrode

TrueFlow™

Vented shield

Vent-to-shield

VWI™

Mild steel consumables



XPR		Amperage	Process	Shield cap	Shield	Nozzle retaining cap	Nozzle	Swirl ring	Electrode	Water tube
170	300									
●	●	30 A	O ₂ /O ₂	420200	420228	420365	420225	420407	420222	420368
●	●	50 A	O ₂ /Air	420200	420237	420365	420234	420233	420231	420368
●	●	80 A	O ₂ /Air	420200	420246	420365	420243	420242	420240	420368
●	●	130 A	O ₂ /Air	420200	420255	420365	420252	420242	420249	420368
●	●	170 A	O ₂ /Air	420200	420513	420365	420261	420260	420258	420368
	●	220 A	O ₂ /Air	420200	420273	420365	420270	420406	420276	420368
	●	300 A	O ₂ /Air	420200	420491	420365	420279	420406	420276	420368

Non-ferrous by amp



		Amperage	Process	Shield cap	Shield	Nozzle retaining cap	Nozzle	Swirl ring	Electrode	Water tube
●	●	40 A	N ₂ /N ₂	420200	420291	420365	420288	420314	420303	420368
			Air/Air	420200	420291	420365	420288	420314	420294	420368
●	●	60 A	N ₂ /N ₂	420200	420309	420365	420297	420323	420303	420368
			F5/N ₂	420200	420309	420365	420297	420323	420303	420368
			N ₂ /H ₂ O	420200	420300	420365	420296	420323	420303	420368
			Air/Air	420200	420309	420365	420297	420323	420294	420368
●	●	80 A	N ₂ /N ₂	420200	420309	420365	420306	420323	420303	420368
			F5/N ₂	420200	420309	420365	420306	420323	420303	420368
			N ₂ /H ₂ O	420200	420300	420365	420290	420323	420303	420368
			Air/Air	420200	420309	420365	420306	420323	420294	420368
●	●	130 A	N ₂ /N ₂	420200	420318	420365	420315	420314	420356	420368
			H ₂ -Ar-N ₂ /N ₂	420200	420318	420365	420315	420323	420356	420368
			N ₂ /H ₂ O	420200	420469	420365	420315	420314	420356	420368
●	●	170 A	N ₂ /N ₂	420200	420327	420365	420324	420314	420356	420368
			H ₂ -Ar-N ₂ /N ₂	420200	420327	420365	420324	420323	420356	420368
			N ₂ /H ₂ O	420200	420472	420365	420324	420314	420356	420368
			Air/Air	420200	420513	420365	420524	420260	420258	420368
●	●	300 A	N ₂ /N ₂	420200	420362	420365	420359	420323	420356	420368
			H ₂ -Ar-N ₂ /N ₂	420200	420362	420365	420359	420358	420356	420368
			N ₂ /H ₂ O	420200	420475	420365	420359	420323	420356	420368

Non-ferrous by process

●	●	N ₂ /N ₂	40 A	420200	420291	420365	420288	420314	420303	420368
●	●		60 A	420200	420309	420365	420297	420323	420303	420368
●	●		80 A	420200	420309	420365	420306	420323	420303	420368
●	●		130 A	420200	420318	420365	420315	420314	420356	420368
●	●		170 A	420200	420327	420365	420324	420314	420356	420368
	●		300 A	420200	420362	420365	420359	420323	420356	420368
●	●	F5/N ₂	60 A	420200	420309	420365	420297	420323	420303	420368
●	●		80 A	420200	420309	420365	420306	420323	420303	420368
●	●	Air/Air	40 A	420200	420291	420365	420288	420314	420294	420368
●	●		60 A	420200	420309	420365	420297	420323	420294	420368
●	●		80 A	420200	420309	420365	420306	420323	420294	420368
●	●		170 A	420200	420513	420365	420524	420260	420258	420368
●	●	N ₂ /H ₂ O	60 A	420200	420300	420365	420296	420323	420303	420368
●	●		80 A	420200	420300	420365	420290	420323	420303	420368
●	●		130 A	420200	420469	420365	420315	420314	420356	420368
●	●		170 A	420200	420472	420365	420324	420314	420356	420368
	●	H ₂ -Ar-N ₂ /N ₂	300 A	420200	420475	420365	420359	420323	420356	420368
●	●		130 A	420200	420318	420365	420315	420323	420356	420368
●	●		170 A	420200	420327	420365	420324	420323	420356	420368
	●	300 A	420200	420362	420365	420359	420358	420356	420368	



Please refer to page 55 for mirror-image cutting consumables.

XPR® torch assembly options

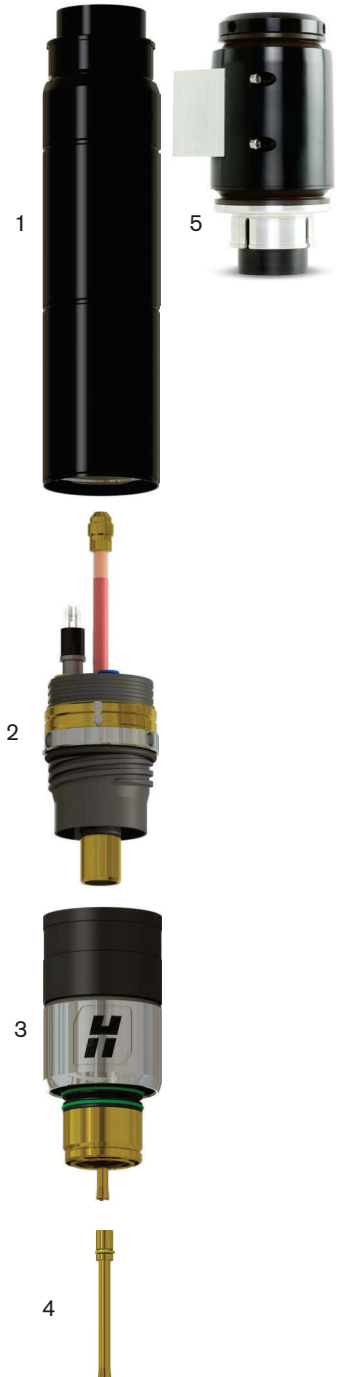


Torch assembly options

	Part number Standard	Part number Standard Bevel/Robotic	Part number Bevel/Robotic	Description
	428383	428825	428831*	Lead: 2 m (6.6')
	428384	428826	428832*	Lead: 2.5 m (8.2')
	428385	428827	428833*	Lead: 3 m (9.8')
	428386	428828	428834*	Lead: 3.5 m (11.5')
	428824	428829	428835*	Lead: 4 m (13.1')
	428387	428830	428836*	Lead: 4.5 m (14.8')
		428978**	428979**	Lead: 6 m (20')**
		428916		Lead: Thru arm robotic 3.5 m (11.5')
		428918		Lead: Thru arm robotic 4.5 m (14.8')
1	420500			Torch mounting sleeve: Standard
	420501			Torch mounting sleeve: Short
	420502			Torch mounting sleeve: Extended
5		420788		Rotational torch mounting sleeve: Short
		420789		Rotational torch mounting sleeve: Medium
		420790		Rotational torch mounting sleeve: Extended
2	420220			Quick-disconnect torch receptacle
3	420221			Quick-disconnect XPR torch
4	420368			Water tube

* Bevel/Robotic lead sets 428831-428836 include an extended 1.2 m (48") strain relief.

** The 6 m (20') lead is compatible only with console to console gas assemblies that are 7.5 m (24.6') or less.



Additional parts available

Part number	Description
429013	XPR electrode torque tool
10080574	XPR consumable tool
027055	Silicone lubricant for o-rings
028872	Torch coolant – Cool solution: 70/30 PG, 1-gal.
428840	XPR170 Mild steel consumables starter kit
428842	XPR170 mild steel consumables starter kit (torch included)
428843	XPR170 non-ferrous consumables starter kit
428841	XPR170 non-ferrous consumables starter kit (torch included)
428944	XPR170 Core console non-ferrous consumables starter kit
428616	XPR300 Mild steel consumables starter kit
428618	XPR300 Mild steel consumables starter kit (torch included)
428617	XPR300 Stainless steel consumables starter kit
428619	XPR300 Stainless steel consumables starter kit (torch included)
428945	XPR300 Core console non-ferrous consumables starter kit
810060	XPR170 plasma instruction manual
809480	XPR300 plasma instruction manual
809490	XPR Preventive maintenance instruction manual
428639	Torch rebuild and filter without coolant preventive maintenance kit
428640	Torch rebuild and filter with coolant preventive maintenance kit
428878	XPR170 electronics preventive maintenance kit (200-240 V)
428879	XPR170 electronics preventive maintenance kit (380-600 V)
428641	XPR300 Electronics preventive maintenance kit (200-240 V)
428642	XPR300 Electronics preventive maintenance kit (380-600 V)